

SPEC SHEET + MEASUREMENTS

SPORT-TEK

Sport-Tek® Exchange 1.5 Long Sleeve 1/2-Zip. ST711

Product photo



Why did we name this stretchable, moisture-wicking 1/2-zip the 1.5? Because it's light enough to wear as a tee, but warm enough to be a light layer.

- 5.6-ounce, 88/12 poly/spandex
- Removable tag for comfort and relabeling
- Reverse coil zipper
- Coverstitch seams throughout
- Open cuffs and hem

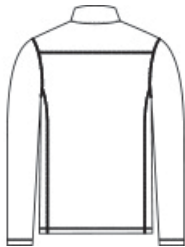
CARE INSTRUCTIONS

Machine wash with like colors. Do not use fabric softener, only non-chlorine bleach, when needed. Tumble dry low, remove promptly. Cool iron if necessary. Do not dry clean.

Sketches



front



back

SPEC SHEET + MEASUREMENTS

SPORT-TEK

Sport-Tek® Exchange 1.5 Long Sleeve 1/2-Zip. ST711

PRODUCT MEASUREMENTS

	XS	S	M	L	XL	2XL	3XL	4XL
Body Length at Back	26 1/2	27 1/2	28 1/2	29 1/2	30 1/2	31 1/2	32	32 1/2
Chest	18 1/2	20	21 1/2	23	24 1/2	26	28	30
Sleeve Length from Center Back	34	34 3/4	35 1/2	36 1/4	37	37 3/4	38 1/2	39 1/4

Body Length at Back: Measured from high point shoulder to finished hem at back.

Chest: Measured across the chest one inch below armhole when laid flat.

Sleeve Length from Center Back: Measure from Center Back neck to shoulder point to sleeve hem.

SIZE CHARTS

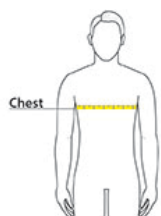
	XS	S	M	L	XL	2XL	3XL	4XL
Chest	32-34	35-37	38-40	41-43	44-46	47-49	50-53	54-57

SPEC SHEET + MEASUREMENTS



Sport-Tek® Exchange 1.5 Long Sleeve 1/2-Zip. ST711

HOW TO MEASURE



CHEST

Measure under the arm and around the fullest part of the chest with arms down, keeping tape horizontal.

COLORS



Dark Denim
Heather
PMS 2380C



Graphite
Heather
PMS COOL
GRAY 11C



Grey Heather
PMS COOL
GRAY 10C



True Royal
Heather
PMS 7687C